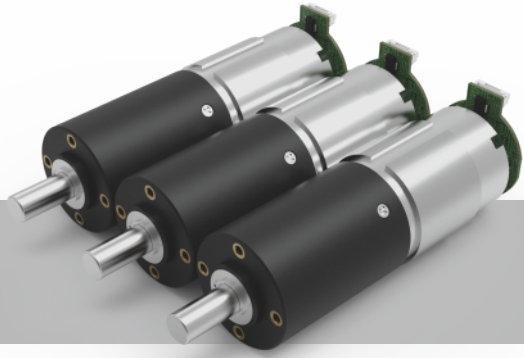


PD032032



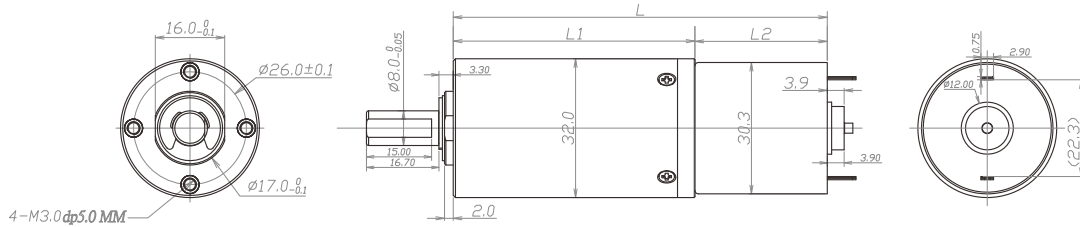
齿轮箱规格 Gearbox Specifications

外径 Outer diameter	32mm	轴承 Bearing	含油轴承 Porous bearing	滚动轴承 Rolling bearing
材质 Material	塑料 Plastic	轴向窜动 Axial endplay	≤0.3mm	≤0.3mm
旋转方向 Direction of rotation	cw & ccw	输出轴径向负载 Radial loading on output shaft	≤50N	≤100N
齿轮箱回程差 Gear backlash	≤3° 可定制 Customizable	工作温度 Operating temperature range	-20 ~ +75°C	

齿轮级数 Gearbox Stages

		2	3	4
减速比 Reduction ratio		16 / 23 / 33	67 / 94 / 133 / 188	272 / 383 / 541 / 764 / 1078
最大容许扭力 (gf.cm) Max rated torque of gearbox (gf.cm)		30000	30000	30000
瞬间容许力矩 (gf.cm) Instant torque of gearbox (gf.cm)		80000	80000	80000
齿轮箱效率 (%) Gearbox efficiency (%)		73	65	58
长度 (mm) Gearbox length L1 (mm)		35.7	45.7	55.7

技术插图 | Technical Drawing



马达规格参数 Motor Specifications

马达(可选择) Motor type (optional)	直流有刷电机、直流无刷电机 Brushed DC motor, Brushless DC motor	输入速度 Input speed	≤12000rpm
电压(可选择) Voltage (optional)	3-24V	电流 Current	300mA max

参考数据 (马达定义值: 24V 7700rpm) 下表根据马达定义值测试, 数据只作为参考值。 Parameter (values at 24V & 7700rpm) The following data is for reference only.

型号 Model	Rated Speed 额定转速	Max Speed 最高转速	Max Rated Torque 额定容许力矩	Max Instant Torque 瞬间容许力矩	Reduction Ratio 减速比	Gearbox Length 减速箱长 L1	Overall Length 总长 L
	rpm	rpm	gf.cm	gf.cm		mm	mm
PD032032-16	469	1875	30000	80000	16	35.7	78.2
PD032032-23	313	1250	30000	80000	23		
PD032032-33	227	909	30000	80000	33		
PD032032-67	112	448	30000	80000	67	45.7	88.2
PD032032-94	80	319	30000	80000	94		
PD032032-133	56	226	30000	80000	133		
PD032032-188	40	160	30000	80000	188		
PD032032-272	28	110	30000	80000	272	55.7	98.2
PD032032-383	20	78	30000	80000	383		
PD032032-541	14	56	30000	80000	541		
PD032032-764	10	39	30000	80000	764		
PD032032-1078	7	28	30000	80000	1078		

注: 可根据客户要求定制 Please contact us for customized products