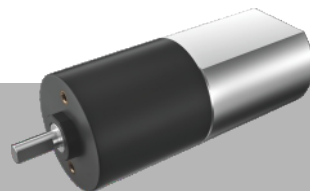


20
mm

Plastic P
塑膠



MC020

外壳材质 Material	输出轴承类型 Bearing	径向负荷 Radial load	轴向负荷 Axial load	输出轴最大承受压入力 Output shaft max press-in force	输出轴径向间隙 Output shaft radial clearance	输出轴轴向间隙 Output shaft axial clearance	空载背隙 No-load backlash
塑料 Plastic	含油轴承 Porous bearing	≤0.4Kgf	≤0.2Kgf	≤2Kgf	≤0.06mm	≤0.3mm	≤1.5°

齿轮级数 Gearbox Stages		3		4			5				6				7						
减速比 Reduction ratio		10	13	21	28	36	52	67	88	99	125	162	188	212	270	301	393	454	512	652	736
额定负载力矩 (Kg.cm max) Max rated torque (kg.cm)		0.5	0.5	0.7	0.7	0.7	1.5	1.5	1.5	1.5	2	2	2	2	2	2.5	2.5	2.5	2.5	2.5	2.5
瞬间负载力矩 (Kg.cm max) Max Instant torque (kg.cm)		1.5	1.5	2.1	2.1	2.1	4.5	4.5	4.5	4.5	6	6	6	6	6	7.5	7.5	7.5	7.5	7.5	7.5
效率 (%) Gearbox efficiency (%)		73	73	65	65	65	59	59	59	59	53	53	53	53	53	47	47	47	47	47	47
齿轮箱长度L1 (mm) Gearbox length L1 (mm)		14.5		16.4			18.3				20.2				22.1						
总长L0 (mm) Overall Length L0 (mm)		39.6		41.5			43.4				45.3				47.2						

使用相对湿度:20%~85%RH,使用温度范围:-15°C ~ 85°C。 Relative humidity: 20%~85%RH, Temperature range: -15°C ~ 85°C.

